

# MONTHLY MEMBERSHIP PROGRESS REPORT

LOCATION INDIA

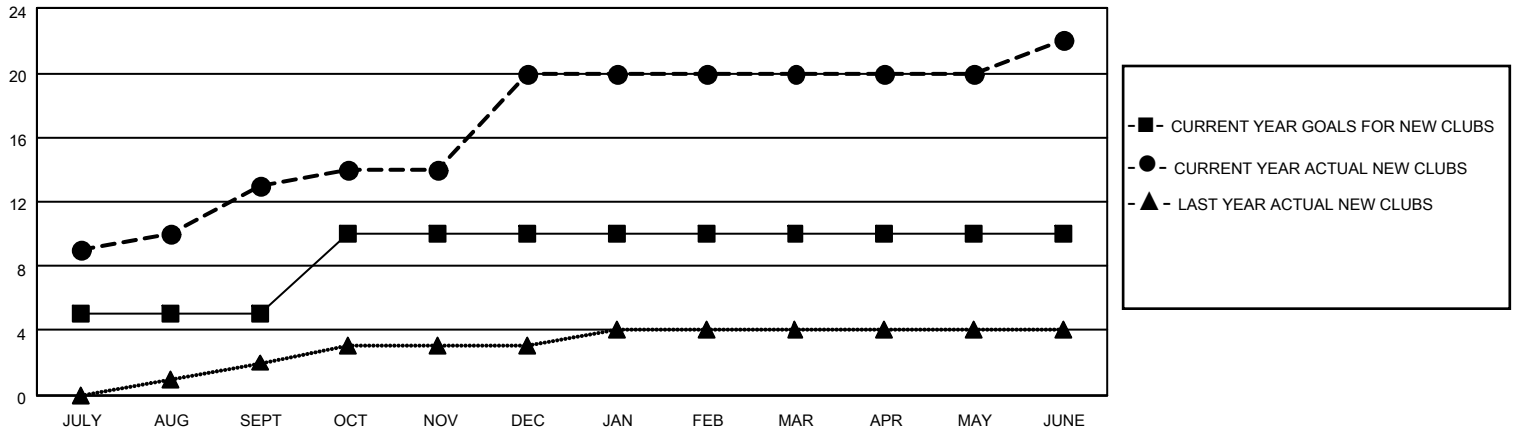
District 321 D

Results as of: 6/30/2021

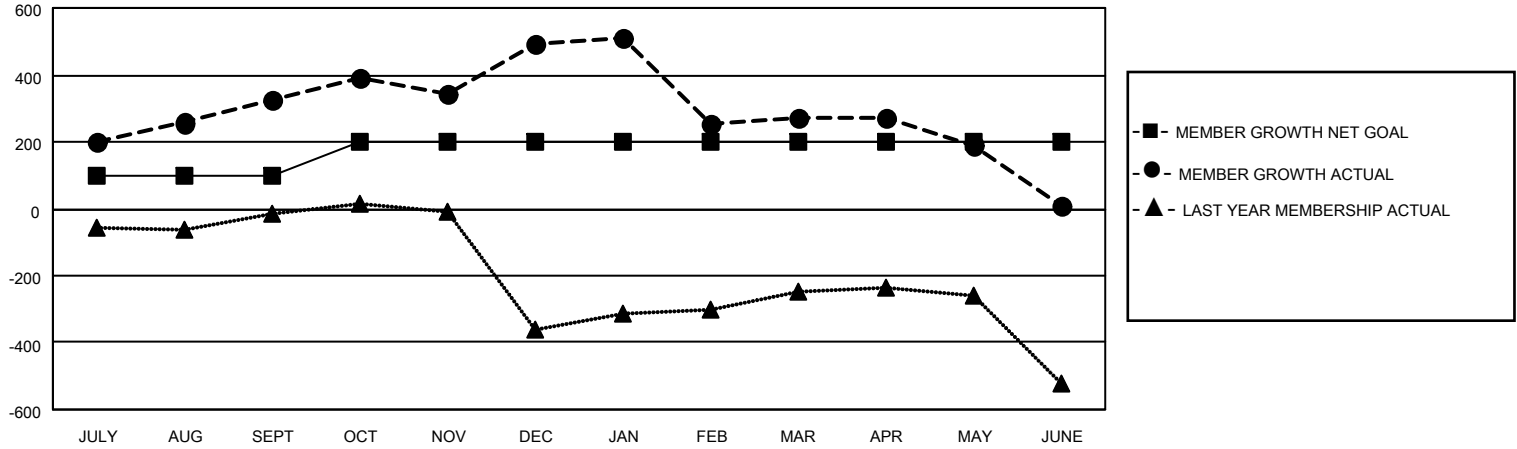
Clubs			
RESULTS FOR 2020-2021			
QUARTER	NEW CLUB GOAL	NEW CLUBS	DROPPED CLUBS
JULY/AUG/SEPT	5	13	0
OCT/NOV/DEC	5	7	0
JAN/FEB/MAR	0	0	12
APR/MAY/JUNE	0	2	0

Members			
RESULTS FOR 2020-2021			
QUARTER	MEMBER GROWTH NET GOAL	MEMBER GROWTH ACTUAL	DROPPED MEMBERS ACTUAL (including transfers)
JULY/AUG/SEPT	100	451	108
OCT/NOV/DEC	100	418	242
JAN/FEB/MAR	0	96	290
APR/MAY/JUNE	0	162	373

**GOALS AND ACTUAL NEW CLUBS CUMULATIVE**



**GOALS AND ACTUAL MEMBERS CUMULATIVE**



DROPPED CLUBS: 12	
<b>DROPPED MEMBERS</b>	
DECEASED	22
CLUB CANCELLED	258
OTHER	733
<b>TOTAL</b>	<b>1,013</b>

91 CLUBS OF 148 ADDED 1 OR MORE NEW MEMBERS

[CLICK HERE FOR CUMULATIVE MEMBERSHIP DATA](#)

<u>GENDER DISTRIBUTION</u>	
MALE	2,905 (73.79%)
FEMALE	1,032 (26.21%)

TOTAL FAMILY UNIT MEMBERS	2,173
FAMILY MEMBERS PAYING HALF DUES	1,267